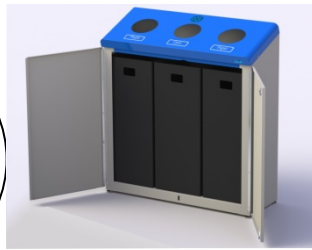




RECYCLING STATIONS



Recycling has never been so easy!



316-S



Model 316



Model 315

- **Durability** : available in powdered coated finish and all stainless steel.
- **Flexibility** : stand alone or walls mounted units, accommodate your needs.
- **Quality** : all steel construction provides durability and fire protection.
- **Ergonomic** : front loading doors for easy removal of contents.
- **Cleanness** : each compartment has a 67 liter plastic liner. Uses 26 x 36 in bags.
- **Security** : soft roundish on corners, no sharp or protruding components

Glass	White Paper Only
Plastic	Glass/Cans Plastic
Cans	Compost
Trash	Trash/Compost
Cans/Plastic	Paper
Glass/Plastic	Newspaper

An English and French label pack with 12 category grouping of common items.

Magnet door closing on 315 series and key tumbler lock on 316 series.

Model	Compartments Capacity	Material Colour	Mounting	Access hole	Dimensions L x w x h	Weight
FR315	2 x 67 liters	Painted steel Gray - blue	Wall mounted	12.7 cm	67.3 x 31 x 96.5 cm	23 kg
FR315-S	2 x 17.7 US gallons	Stainless-steel	(Floor mounted optional)	5"	26 ½ x 12 ¼ x 38"	50 lbs
FR316	3 x 67 liters	Painted steel Gray - blue	Floor mounted	15.2 cm	92.7 x 34 x 100 cm	35 kg
FR316-S	3 x 17.7 US gallons	Stainless-steel		6"	36 ¼ x 13 ⅝ x 39 ½"	75 lbs